



EURO5

Series

HINO 3000

**STRONG, SMART & SMOOTH
FOR YOUR BUSINESS**



**WARRANTY
5 YEARS
or
300,000KM**
Terms and conditions apply

FREE*
SERVICE PROGRAM
5 TIMES
(1st-5th Service)
*Terms and Conditions apply

**BREAKDOWN
24 HOURS
SERVICE**
(subject to road conditions)
Toll Free: 1800-88-3666

**B20
DIESEL
Compatible**

HINO-CONNECT
Hino Telematics System

Follow Us



USP



Service



Dealer

HINO Authorized Dealer

Power Your Drive, Smart For Your Business

Engineered for intelligent performance, it delivers unwavering power, advanced efficiency, and refined control making every drive smarter, and every business move more strategic.



SAFETY

Enhanced Protection for Driver & Passenger

01 Supplemental Restraint System (SRS) *Driver Airbag cushions during impact*

Enhanced Safety For The Driver
Advanced Protection
Peace Of Mind On The Road



01 Driver Airbag System



Airbag at the Steering Wheel

02 Emergency Locking Retractor System (ELR) *ELR seat belt (Driver + Passenger) secures during collision*

Automatically Locks The Seatbelt During Sudden Stops, Collisions Or Rapid Deceleration
Regulatory Compliance - Meets UN EGE R16 Safety Standards
Reduces Injury Risk By Minimizing Movement During Impact



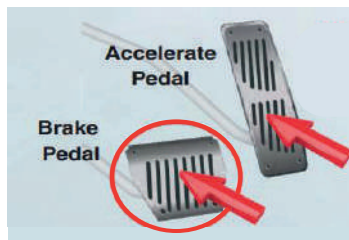
02 ELR Light Indicator



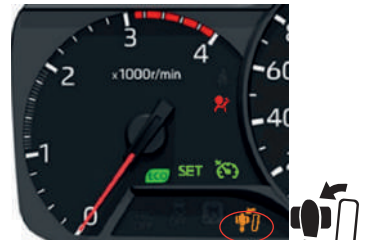
ELR Seat Belt

03 Brake Override System (BOS) *Brake Priority for Safety*

Automatically Prioritizes Braking When Both The Accelerator And Brake Pedals Are Pressed Simultaneously
Accident Prevention That Are Caused By Panic Braking Or Electronic Throttle Malfunctions
Enhanced Driver Control



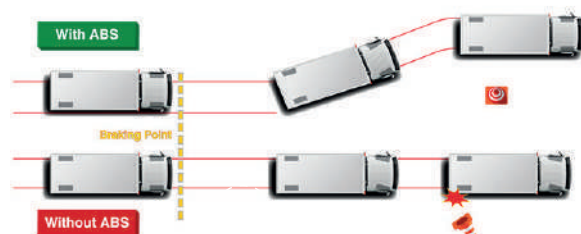
03 Brake Override System (BOS) Indicator Light



BOS Light Indicator

04 Anti-locking Brake System (ABS) with Electronic Brake Distribution (EBD) *Shorter Stopping, Better Control*

Advanced Braking Systems For Ultimate Safety
Optimizes Brake Force Distribution For Stability, Even When Loaded



04 ABS

A breakthrough

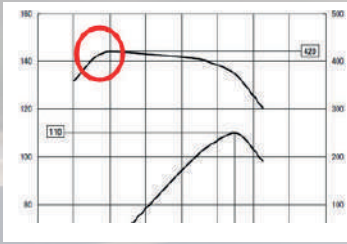
05 /// Flat Torque Engine

Consistent torque for long hauls & heavy loads

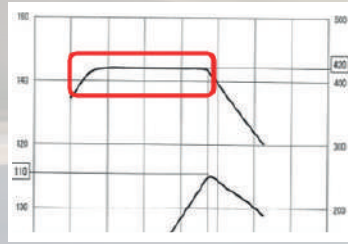
Consistent Power Across RPM Range

Smooth Usable Torque

Perfect For Heavy Loads & Long Hauls



05 Normal Torque (Hino Euro 3)



Flat Torque (Hino Euro 5)

06 /// Diesel Particulate Active Reduction (DPR) System

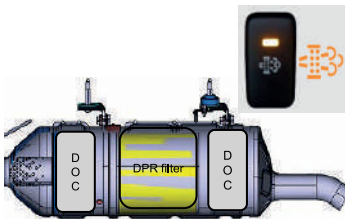
Cleaner, Smarter Emission Control

One Touch Activation

Real Time Tracking With Soot Level Bar

System Alert With A Blinking Switch And Disappear When It Finish

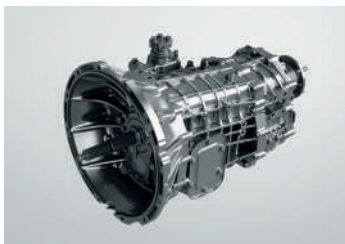
No Ad-Blue Required, Saves On Running Cost And Maintenance



06 DPR System



DPR Light Indicator



09 Transmission Cutaway (MT)



Gear Level (AT)



10 HINO-Connect



11 Functions Display



12 Exterior Euro 3



Exterior Euro 5

STRONG

Power That Stays With You |

07 /// Alternator

80A Alternator for Higher Demands
Ideal For Refrigerated Body Applications



07 Alternator + "Refrigerated Body" highlight

08 /// Chassis Frame

Reinforced Strength & Durability

Reinforced High Strength Frame With 540 N/mm²

Resist Bending Or Deformation Pressure

Added Safe And Durability



08 Frame diagram



SAFETY



SMART



SMOOTH



STRONG

09 /// Transmission

Smooth Drive, Maximum Control

AT Mode - Sequential Gear Shifter, Reduce Fatigue

MT Mode - Better Gradeability



SMART

Smarter Fleet Management |

10 /// HINO-CONNECT

The layout of the switches is intuitive and easy to use

GPS Tracking, Theft Monitoring, Service Reminders

11 /// Functions Display

Insights at Your Fingertips

Driving Score, Fuel Consumption, Location Navigation



SMOOTH

Fresh New Look, Same Reliability |

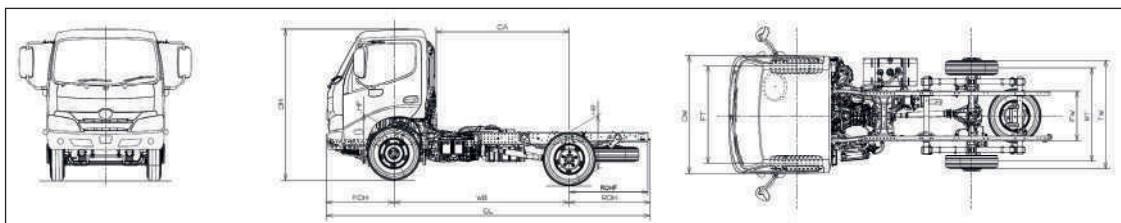
12 /// Exterior Update

Updated chrome-plated front grill

New Front Grill With Chrome Plated

SPECIFICATION - 4 Wheeler Models

		MODEL	300 Series			
ITEM	MODEL CODE		XZU600R - WKMLS3	XZU640R - WKMLS3	XZU600R - WKTLS3	
ENGINE	MODEL		N04C-WL			
	EMISSION STANDARD		Euro 5			
	TYPE		Diesel, 4-Cylinder Vertical In-line, Overhead Valve, Water Cooled and DPR System			
	DISPLACEMENT	cc	4,009			
	MAX OUTPUT (ISO NET)	kW(PS)/rpm	110 (150) / 2,500			
	MAX. TORQUE (ISO NET)	Nm(kgfm)/rpm	420 (43) / 1,300-2,500			
	BORE & STROKE	mm	104 x 118			
	FUEL INJECTION SYSTEM		Electronic Control Common Rail Type			
AIR INTAKE SYSTEM		Turbo Charged Intercooled				
MAX. ENGINE SPEED	rpm	3,100				
CLUTCH	TYPE		Dry Single Plate, Diaphragm Type with Damper Spring			
	DIAMETER	mm	325			
TRANSMISSION	MODEL/NO. OF SPEED		RE50 / Manual 5-Speeds		A862E / Automatic 6-Speeds	
	TYPE		5 Forward and 1 Reverse, with Overdrive		6 Forward and 1 Reverse with Overdrive	
	RATIO (1st - TOP)		5.342 / 0.712		3.742 / 0.634	
AXLE	FRONT	TYPE	Reversed Elliot, "I" section beam			
		CAPACITY	2,600			
	REAR	TYPE	Full Floating, Single Reduction, Single Speed by Hypoid Gearing			
		CAPACITY	4,400			
BRAKE	SERVICE BRAKE TYPE		Hydraulic System with Ventilated Disc for Front Wheels and Dual Leading Shoes for Rear Wheels with Auto Adjuster			
	SERVICE BRAKE CONTROL		Vacuum Servo Hydraulic, Dual Circuits and Antilock Braking System (ABS) with Electronic Braking Distribution (EBD) and Brake Override System (BOS)			
	PARKING BRAKE TYPE		Mechanical, Internal Expanding, Acting on Transmission Output Shaft			
	EXHAUST BRAKE TYPE		Equipped			
SUSPENSION	FRONT	TYPE	Multi-Leaf Springs with Dual Acting Shock Absorber and Stabilizer Bar			
	REAR	TYPE	Multi-Leaf Springs with Dual Acting Shock Absorber			
FRAME	FRAME WIDTH	mm	700			
	HEIGHT x WIDTH x THICKNESS	mm	177 x 60 x 4.5			
CABIN	TILTING		Mechanical Type with Torsion Assist			
	STEERING		Telescopic & Tilt Steering Column, Recirculating Ball Integral Power Steering			
	POWER WINDOW, CENTRAL LOCKING & SEAT BELT		Equipped			
	AIR BAG		Equipped (Driver Side)			
WHEELS & TIRE	WHEEL TYPE		5 Stud Disc Wheel			
	RIM SIZE & TIRE SIZE		RIM : 16 x 5.50K, TIRE : 205/85R16			
ELECTRICAL	TYPE		24V			
	BATTERIES		12V x 2 , Series Connection			
	ALTERNATOR CAPACITY		24V - 80 Amps			
FUEL TANK		L	80	100	80	
PERFORMANCE						
G.V.W Rating		kg	5,000			
PERFORMANCE	SPEED LIMITER		Equipped			
	GRADEABILITY	(tan Ø) %	60			
TRANSMISSION RATIO	MODEL		RE50		A862E	
	RATIO		1st : 5.342, 2nd : 2.975, 3rd : 1.604, 4th : 1.000, 5th : 0.712, R : 4.970		1st : 3.742, 2nd : 2.003, 3rd : 1.343, 4th : 1.000, 5th : 0.773, 6th : 0.634, R : 3.539	
REAR AXLE	RATIO		4.625		4.875	
DIMENSION & MASS						
CHASSIS MASS (with std tools set & spare tire)	FRONT AXLE	kg	1,445	1,490	1,465	
	REAR AXLE	kg	635	645	650	
	TOTAL	kg	2,080	2,135	2,115	
DIMENSION	WHEELBASE	WB	mm	2,525	3,075	2,525
	OVERALL LENGTH	OL	mm	4,675	5,435	4,675
	OVERALL WIDTH	OW	mm	1,695		
	OVERALL HEIGHT	OH	mm	2,115		
	CAB TO AXLE CENTER	CA	mm	1,920	2,470	1,920
	FRONT OVERHANG	FOH	mm	990	985	990
	REAR OVERHANG	ROH	mm	1,130	1,370	1,130
	FRONT TREAD	FT	mm	1,400		
	REAR TREAD	RT	mm	1,350		
	FRAME WIDTH	FW	mm	700		
	TIRE WIDTH	TW	mm	1,555		
	TURNING RADIUS (ON TIRE)		mm	5,500	6,600	5,500
	SEATING CAPACITY			3		



HINO MOTORS SALES (MALAYSIA) SDN BHD (187863-U)

Selangor: Lot PT 24, Jalan 223, Section 51A, 46100 Petaling Jaya, Selangor Darul Ehsan, Malaysia. Tel: (603) 7957 5199 (12 lines) Fax: (603) 7954 3276

Sarawak: No. 230, Lot 3477, Block 226, KKND (P/L 2543), Jalan Kung Phin, 93250 Kuching, Sarawak. Tel: (082) 451 611 (5 lines) Fax: (082) 451 993

Sabah: Miles 4 1/2 Jalan Tuaran, Lot No. 353, Taman Cempaka, Likas, 88450 Kota Kinabalu, Sabah, Malaysia. Tel: (088) 393 663 Fax: (088) 424 223

www.hino.com.my